

Welcome Incoming 6th Grade Parents

February 26, 2020

Evening's Agenda



6:30 - 6:50 LMS General Information

6:55 - 7:05 Session #1

7:10 - 7:20 Session #2

7:25 - 7:35 Session #3

AAP Families may skip the Academic Information Session since it does not pertain to your child.

*Spanish translation - follow groups A-G

7:40 - 8:00 Self-Guided Tours (Campus-wide) &
Informational Tables (Cafeteria)

8:00 Campus Closes

Leota Admin Team

Laurie Powers
Dean of Students

Bryan McNiel
Assistant Principal

Audee Gregor
Principal



Leota Purpose Statement



We will create a caring and safe environment that is engaging, considers the whole person and fosters a sense of community, lifelong learning and positive interactions with peers.

Modified Block Schedule



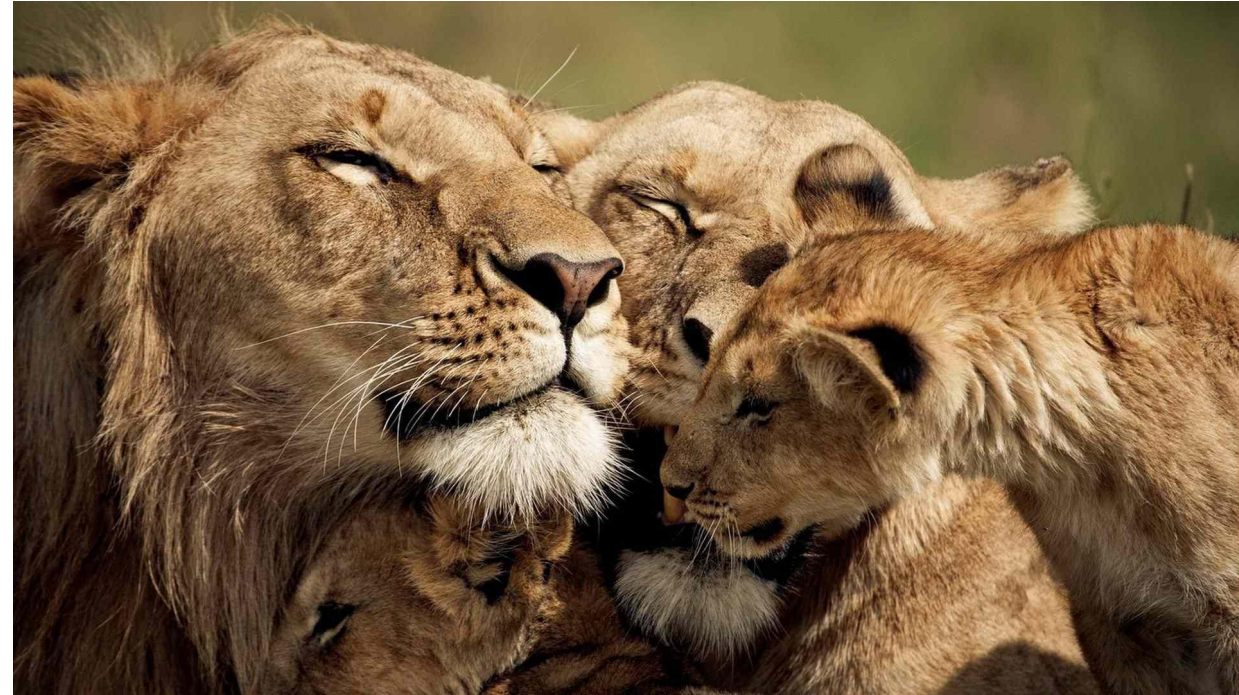
Monday	Tuesday	Wednesday	Thursday	Friday
Per. 1-6 Pride	Per. 1-6 Pride	Per. 1, 2, 3 No Pride	Per. 4 "Meeting & Reading" Per. 5, 6 Pride	Per. 1-6 Pride

*Three Mixed Grade Lunches (30-minutes)



Academic Pride

- Similar to homeroom
- 30-minutes
- 4 Days per week: M, Tu, Th, F
 - End of the Day
 - Academic Support & Intervention Time
 - Graded Pass/Fail



Current Start and End Times

(New times are TBD)

Mon./Tues./Thurs./Fri.:

- Start at 8:35am
- End at 3:10pm

Weds. Early Release

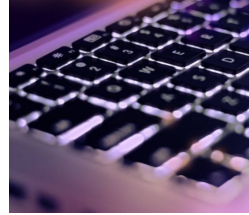
- End at 1:40pm



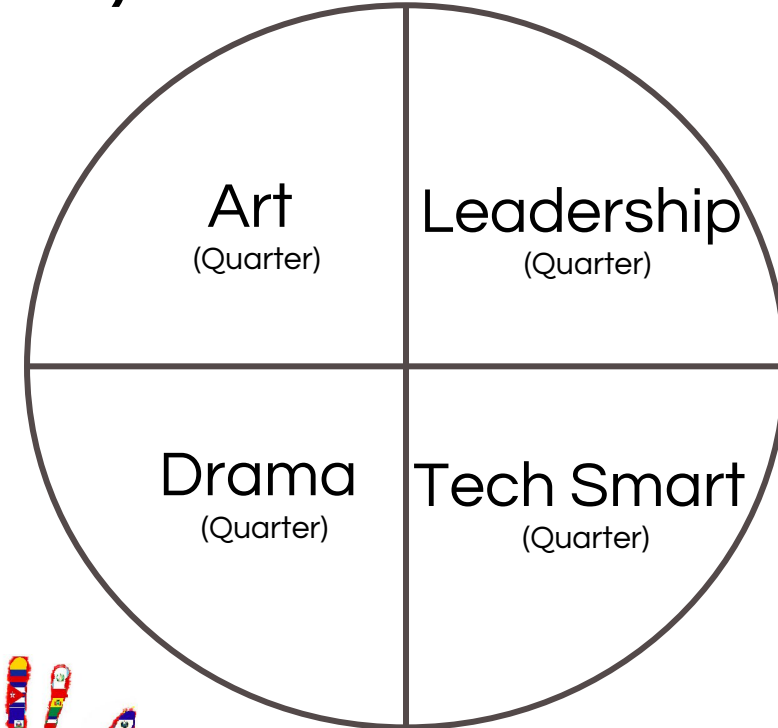
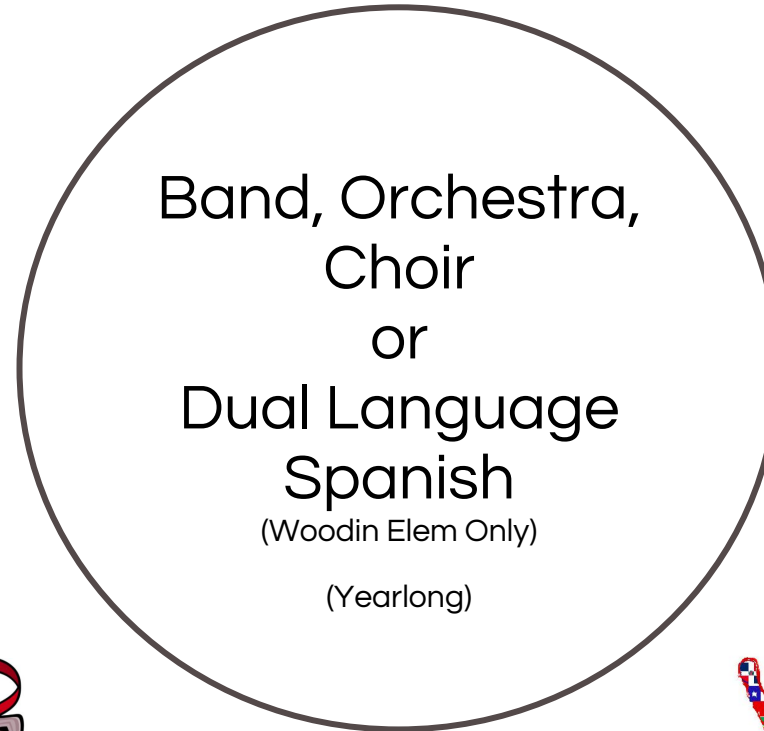
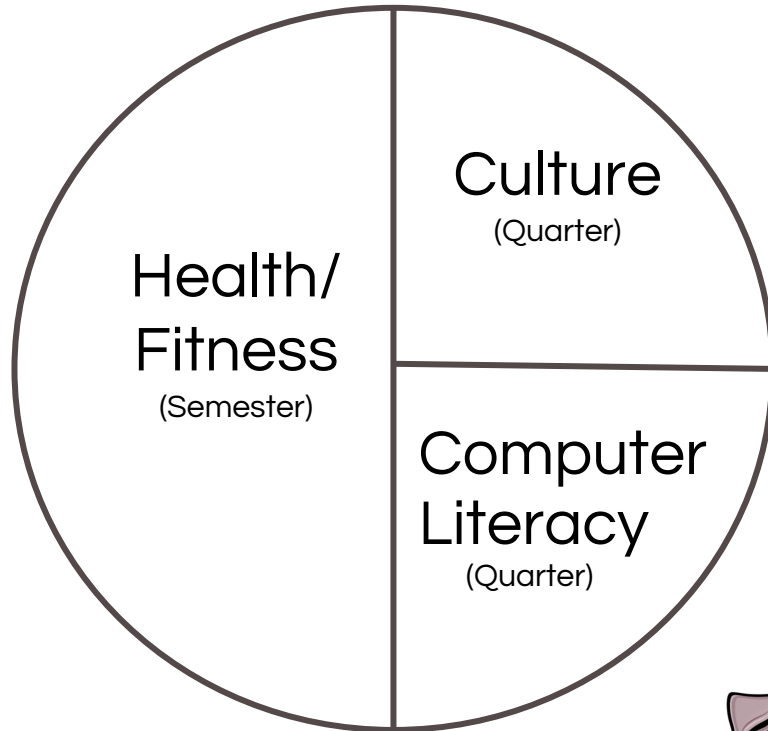
Essentials Wheels



Wheel "A"
Required for all



Wheel "B"
**(2 options -
pick one)**

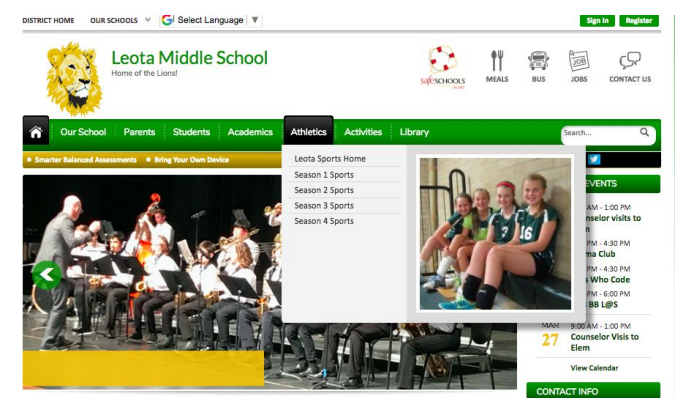


Special Education



- Counselors & Case Managers met, or will meet, with elementary teachers to ensure proper special education placement.
- If you missed this evening's special education pre-session at 6:00, your child's registration sheet was reviewed prior to it coming home.

MS Athletics



- All sign-ups done online using 'Final Forms'
 - Forms, releases, physicals (due before first practice to main office)
 - Payment is separate through SchoolSales
- See 'Athletics' tab on the Leota homepage for more information.



Student Life at Leota



- Clubs
 - STEM
 - Book Club
 - Honor Society
 - Jazz Band
 - Yearbook
 - Disc Golf
 - Chess Club
 - And many more...



- Assemblies
- Special Events
 - Spirit Week
 - Reptile Man
 - Career Day
 - 5K
 - Square Dancing
 - And much more...

Interventions

- Star Time
- Academic Prides
- Mentor/Peer Tutor Time
- Academic Support Programs
- PBIS (Positive Behavior Intervention Supports)
 - Pillars of Respect, Empathy & Effort



Activity Bus



- Four days per week
 - Mondays, Tuesdays, Thursdays, Fridays
- For after school sports, clubs and activities
- Leaves Leota promptly at 4:40
 - Could change if start times change

Student Visits in June



- June 11th and June 12th
- Information will be sent home via your child's elementary school later in May
- Begin in the theater followed by campus tours



WEB Dates



- WEB - Where Everybody Belongs
- Date TBD - Incoming 6th graders
 - Official first day of school (usually early Sept.)
 - Students can purchase lunch using their student accounts or bring a lunch
 - No binders or backpacks needed or allowed on this day

Back to School Fair

- Tentatively Aug. 24th
- 8:30 am - 1:30 pm
 - Have school picture taken
 - Pay for any necessary items
 - Practice lockers
 - Sign up for PTSA
 - Donate to Pave the Way Together (PTWT)
 - Activities Information
 - Purchase Spirit Wear



PTSA: Current President

- Robin McKenzie
 - Please consider joining PTSA
 - Supports all our students



LEOTA MIDDLE SCHOOL

Back to School Newsletter

19301 168th Ave NE | Woodinville, WA | 98072 | 425.408.6500

Principal: Audee Gregor | PTSA Presidents: Rachel Fitzgerald and Laura Sauls

STUDENT DRESS CODE
Due to our concern for students and staff of the Leota Junior High learning community, we strive to foster an environment that is safe, healthy, conducive to teaching and learning, and promotes the dignity of all students. Student dress should be comparable with an educational setting—rather than an off-campus social setting. Students may express individuality in their dress and grooming as long as their appearance does not cause or have the potential to cause a disruption to the educational process for themselves, other students, or staff.

In an effort to maintain a safe and academic focus we ask that students attending Leota Junior High adhere to the following guidelines:

Please do not wear clothing or display accessories that:

- Demean or degrade individuals or groups of people.
- Display violent or illegal activity (e.g., weapons, alcohol, tobacco and other drug use).
- Exhibit sexual innuendo, obscene sexual messages, vulgarity and/or profanity.
- Show affiliation with gang-including handsets, and accessories determined by local law enforcement.

The shaded portion of this figure represents the front and back views. Those parts of the body must be covered in all positions (sitting, standing, bending, reaching, moving while attending school).

Head: For safety reasons, hoods and earphones are not permitted at school.

Torso: Clothing must have straps, cover shoulders, backs, chests, and undergarments.

Legs: Shorts, skirts, dresses must be at all times your fingertips when your arms are extended at your side. Undergarments must be covered.

Feet: For safety reasons, footwear must be worn at all times and be appropriate to the activity.

SCHOOL SUPPLIES

SCHOOL SUPPLY LIST

Organization skills are important for success in junior high. Teachers recommend that students create one portable binder system that can be taken to each class as backpacks must be left in lockers. Some teachers will recommend additional supplies after school starts. The items below are required.

The binder system that works best is:

- One binder 2 1/2 - 3 inches (needs to be thick enough to store everything)
 - Pencil pouch with 3-hole punch (nylon suggested for durability)
 - Planner will be provided when school starts. The planner has a 3 hole punch and will be kept in binder.
 - 5 folders with pockets and 3-hole punched to labeled for each subject area. (Math, English, Science, Social Studies and Health/Fitness)
 - 3 spiral notebooks, college ruled and 3-hole punched
 - 1 - 2 composition books, preference for college ruled (All 8th and 9th grade and 7th grade AAP/Challenge Science students)
 - College ruled paper (some in folder, keep some at home or in locker)
 - Graph paper (1/4 inch square), 3-hole punched
 - Metric ruler protractor
 - 4 function calculator for science (See below for recommendations)
- The pencil pouch should always have:**
- Pencils
 - Pens (Black, Blue and Red)
 - Highlighters (3 different colors)
 - Post-it notes (3x3 inch)
 - 6 colored pencils
 - 4 function calculator (see page 5 for recommendations)
 - Small scissors



PURCHASE YOUR WORKBOOKS, ASB CARDS AND YEARBOOKS AT THE BACK TO SCHOOL FAIR ON AUGUST 29TH OR ONLINE AT:
<https://schoolsales.wednet.org>
GYM UNIFORM ORDER DUE DATE: AUGUST 22nd!
<http://www.tbun.com>

MORE IMPORTANT INFO

LEOTA CURRICULUM NIGHT

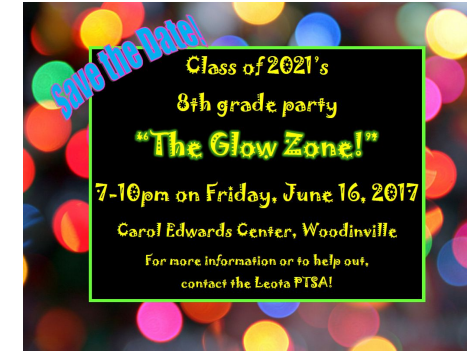
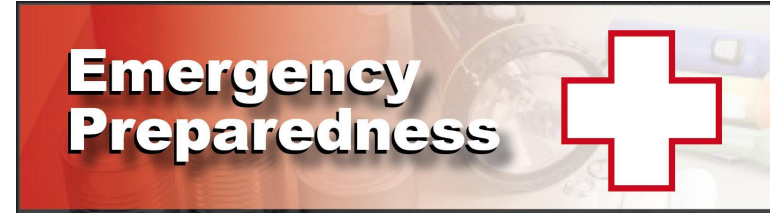
Curriculum Night Check List:

- ☐ Mark your calendar – September 14th, 6:30pm
- ☐ Go to the gym with your student's schedule and school map
- ☐ Bring PTSA "Pass the Hat" donation Cash or check (payable to Leota PTSA)
- ☐ Help fill the "HAT" with your donation at the beginning of the evening in the gym or in "Pride" class
- ☐ Join PTSA \$14 per membership (includes FREE access to the Leota Student Directory)

Parents and guardians are invited to the Leota Junior High Curriculum Night on Wednesday, September 14th at 6:30 pm. The event will begin in the gym. You will then be dismissed to your student's first period class and follow your student's daily schedule, proceeding from class to class. You will have an opportunity to meet individual teachers and learn about your student's classes. Teachers will speak briefly about curriculum and answer questions. This will be a great way to experience your child's daily routine. The school's AIDS curriculum will also be available for review. On the day of Curriculum Night, students will bring home a copy of their schedule and a school map.



-



Pave the Way Together (PTWT) Fund Drive: Joint PTSA & ASB

- Goal: \$75 per family average
- Funds PTSA & ASB
 - Approx. 950 students
 - Over 150 Programs
- Bonus: No Selling!!!

LEOTA PTSA ANNUAL FUND REWARDS

PAVING THE WAY IS HARD WORK AND DESERVES A REWARD

ALL SCHOOL GOALS

If the donation total reaches \$25, \$50, or \$75 per student levels, Audree and Bryan and maybe some teachers will:

Kiss the Piglet	\$75
Ice Bucket Challenge	\$50
Pie Eating Contest	\$25
level per student	

TOP 1 STUDENT/GRADE*

Principal for a Day

TOP 10 STUDENTS/GRADE:*

Jamba Juice Gift Card

ALL INDIVIDUALS RAISING OVER:*

\$1000	High School Gear Pack
\$500	Leota School Gear Pack
\$250	Night at the Movies Gift Card
\$125	Front of the Line Lunch Pass
\$75	Free Pride Time with a Friend

*Individuals over \$125 also entered into a drawing for "XBOX ONE S" console



TOP 3 PRIDES

Top 3 Prides in total donations will each receive:

PIZZA PARTY

TOTAL PRIDE GOALS

Every Pride that reaches a total donation level that equals \$75 times the number of students in the Pride will receive:

KONA ICE

EARLY PARTICIPATION

Curriculum Night	9/11
Community Café	9/20

PTSA Paid Memberships and Sponsors at the cut off times for these events will be eligible for dinners out, family nights, swag bags and more (\$25-\$75 value)

GRAND PRIZE (Drawing on 10/16)

Seahawks Tickets

1 ticket is provided for every \$25 donation above \$75. Example: total donations, memberships, sponsorship, corporate matching equaling \$125 will receive 3 tickets.



LEOTA PTSA ANNUAL FUND — NOW THROUGH OCT 4



Option 1: Leota PTSA

Membership + Sponsorship + Corporate Matching + Donations can be made at:
www.leotaptsa.com

Option 2: 99Pledges

Donations + Ask Friends and Family to Participate + Follow Individual and Pride Level Totals at:
bit.ly/LeotaTogether2019

Note: Qualifying purchases made on www.leotaptsa.com will be added to the rewards totals on the 99Pledges website.
bit.ly/LeotaTogether2019 is case sensitive so the T and L must be capitalized. Link is also on leotaptsa.com website.
ALL DONATIONS ABOVE \$75 PROVIDE ADDITIONAL PROGRAMS AND SCHOLARSHIPS FOR STUDENTS IN NEED.



LEOTA PTSA ANNUAL FUND

LEOTA PTSA and ASB JOIN FORCES



TWO GREAT ORGANIZATIONS

WHY are we raising funds?
Because we want to continue providing educational programs, experiences, sports, arts and grants far above basic education. All kids are able to use and benefit from these programs.

WHY are we combining forces? Because we want to make it clearer and easier than it has ever been while showing the cost to raise funds by over 90%.

WHY are we calling this a fund and not a fundraiser? Because we want to invest in programs and people, not sales quotas. We will have rewards but they will focus on Pride and whole school achievement.



PTSA PROGRAMS:

Career Day and Speakers
Science Olympiad (NEW)
Watch DOGS! And WEB Leaders
Leota PTSA Community Café (NEW)
Teacher and Library Grants
Field Trips and Classroom Projects
Emergency Supplies and Safety Equipment
Parent Education and Staff Appreciation
Student Leadership Opportunities (NEW)
Advocacy | Legislative Assembly | Focus Day
8th Grade Party and Ski Club
National PTA Reflections (6 art categories)
Helping families in need (Lunch grants, etc.)
Member Only Discounts (over \$500)

ASB PROGRAMS:

Student Leadership
Art, Drama, Languages
Sports Uniforms/Gear
Referees for all Games
Honor Society
School Activities
Guest Speakers
WEB Leaders

Academic Clubs
Materials for Clubs
Sports Equipment
Event Transportation
Founding New Clubs
School Assembly's
Competition Fees
and more...



What are the methods of giving?

Starting 8/26, you will be emailed the URL to register your student on a fundraising website where you can email friends and family to participate. Payment methods will be credit card only online. Due to limited volunteers, credit card payments online are sincerely appreciated. The link will also be available at www.leotaptsa.com. COMPANY MATCH, SPONSORSHIPS and PTSA MEMBERSHIP can be included in rewards totals.

Date	Event	Activity
8/26	Back to School Fair	Annual Kickoff
9/11	Curriculum Night	Early Participation Drawings
9/13	Student Assembly	Student Intro
9/20	PTSA Community Café	Demo Programs / More Drawings
10/4		Final Turn In Day
10/11		Verification and Final Totals

more information at www.leotaptsa.com

Pave the Way Together (PTWT) Fund Drive: Joint PTSA & ASB Continued

LEOTA PTSA SPONSORSHIP

BECOME AN LIONHEART SPONSOR, IT HAS BENEFITS...

FRIEND of LEOTA PTSA (\$250+)

- Invited to attend PTSA Community Café every month and be recognized in person.
- Listed on the PTSA Website all year under AWESOME SPONSORS (List/Small Logo)
- Recognition as Friend on Curriculum Night (if received by then) (List/Small Logo)
- Recognition as Friend in 4 weekly and 4 monthly newsletters. (List/Small Logo)
- Recognition as Friend in front of School for the year (Friend Level)
- Includes 4 PTSA memberships



HERO of LEOTA PTSA (\$350+)

- Invited to attend PTSA Community Café every month and be recognized in person.
- Listed on the PTSA Website all year under AWESOME SPONSORS (List/Medium Logo)
- Recognition as Hero in 4 weekly and 4 monthly newsletters. (List/Medium Logo)
- Recognition as Hero in front of School for the year (Hero Level)
- Recognition as Hero on Curriculum Night (if received by then) (List/Medium Logo)
- Recognition as Hero in District Wide Special PTSA Community Newsletter to over 23,000 parents (Listed)
- Includes 4 memberships



Champion of LEOTA PTSA (\$500+)

- Invited to attend PTSA Community Café every month and be recognized in person.
- Listed on the PTSA Website all year under AWESOME SPONSORS (List/Large Logo)
- Recognition as Champion in 6 weekly and 6 monthly newsletters. (List/Large Logo)
- Recognition as Champion in front of School for the year (Champion Level)
- Recognition as Champion on Curriculum Night (List/Large Logo)
- Recognition as Champion in District Wide Special PTSA Community Newsletter to over 23,000 parents (Logo with Prominent Location)
- Includes 4 memberships

Thank You for
Your Kindness

- All sponsorships, memberships, and corporate matching are included in rewards totals.



CORPORATE MATCHING

MAXIMIZE YOUR IMPACT WITH CORPORATE MATCHING

1. Ask your company if they match
2. After donating to the Leota PTSA Annual Fund log into your company's matching fund site and follow their process to document the donation.
3. Leota Middle School PTSA (formally Leota Jr. High School PTSA) should be listed as an official charity already in your companies site. If not, please add us. We are an official 502c3 registered with the Secretary of State. Contact us for the EIN number if it is needed.
4. Don't forget to log all your **volunteer hours** as donations with your company.
5. If you would like your corporate donations to count in the Annual Fund Rewards, please email a screenshot or forward the email receipt from your company to confirm that the matching has been entered to contact@leotapta.com.



Please join PTSA!

Be sure to stop by the
cafeteria after for
more information.



**WE NEED
YOU**

to

**MAKE IT
HAPPEN**

Thank you for coming this evening!



Please move to Session 1 at this time.